

# CAMP YOUNG JUDAEA

Wimberley, TX

ropes course • campfire • hiking • paddleboats • tennis • smiling staff • FUN!



wireless internet • clean accommodations • beautiful Texas hill country



- **Established in 1952**
- **Sleeps over 400 people!**
- **Only 40 minutes from Austin**
- **Food included with your stay**

# EXPERIENCE CYJ

CYJ (Camp Young Judea) is the ideal site for all to focus on goals and objectives without distractions. Located in the beautiful Hill Country town of Wimberly, CYJ is a convenient destination from most of Texas's major cities.

We offer a wide variety of facilities that accommodate both large and small groups. Our 370 sleeping accommodations range from cabins to motel-style lodge rooms, and we also provide food services.

## FOOD SERVICE

CYJ's dining complex seats over 400 for every meal. Food services (meals, snacks, and a 24-hour coffee station) are yet another amenity that is included with the campers stay! At camp there are three meals a day including a healthy snack once or twice during the day. Each meal is nutritious and encourages healthy eating habits that will ensure the maximum amount of energy for each camper. There are always vegetarian options as well as a salad bar and fruit at each meal. The menu is designed to teach campers about eating healthy every day, even after going home from camp.

## MEETING SPACE

CYJ have many unique activity centers. venture outside into the 30 foot tree house canopy for something different. We have facilities to accommodate any programming needs, including climate controlled conference rooms, a large auditorium, multimedia dome, covered pavilions, outdoor amphitheater, a giant star tent, and other naturally beautiful outdoor locations as well.



## ACTIVITIES

Tennis  
Volleyball  
Basketball  
Paddleboats  
Canoeing  
Climbing Wall  
Arts and Crafts  
3 Waterslides  
Ropes Course  
Aquatics Water Park!  
Disc (Frisby) Golf Course  
Meditation Tree House  
Giant Chess Board

Campfire  
Soccer  
Lake  
Zip Line  
Hiking  
Archery  
Softball  
Ga Ga

**"You won't regret it"**

## CHALLENGE COURSE

Campers will have a chance to experience the CYJ Ropes Course.

Built along a creek among shady oak trees, this setting provides an awesome arena for learning and growth opportunities. Challenge yourself on a 50 foot climbing wall or through the "Spider Web."

Participants are placed in carefully controlled situations to foster team building, cooperation with the support of trained facilitators.



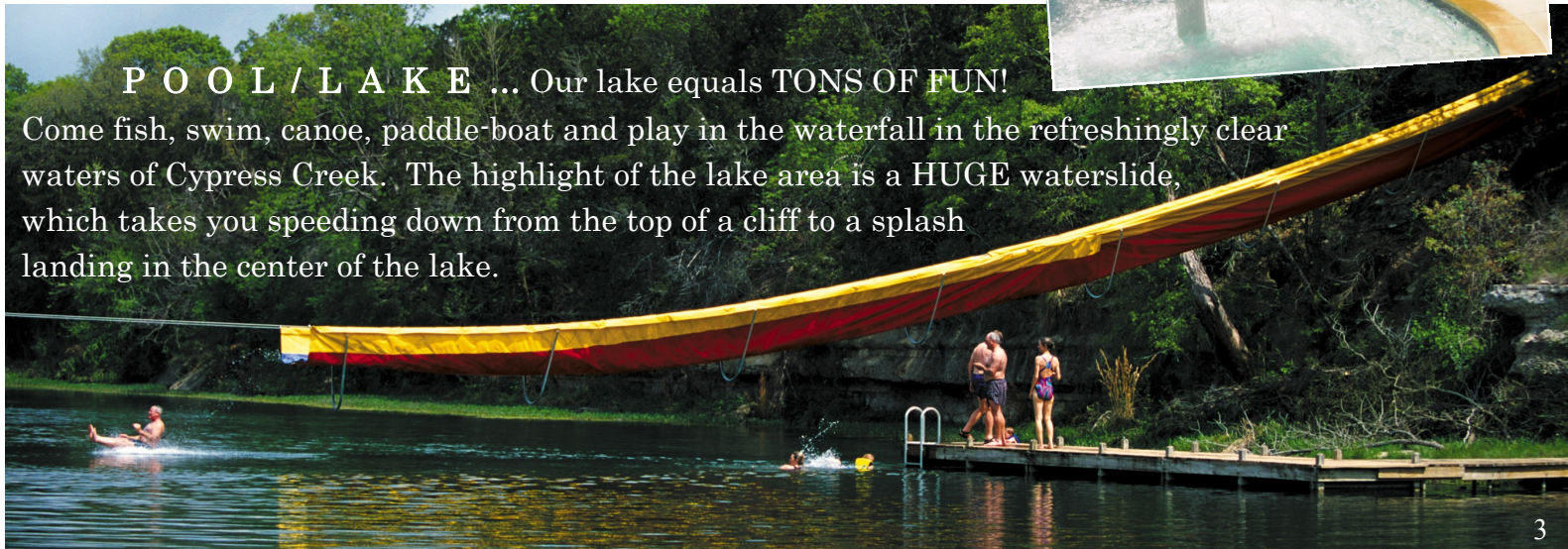
## SLEEPING ACCOMMODATIONS

Camp young Judaea is equipped with three lodging options. Campers are staying in our 20 air-conditioned cabins with bathrooms and showers in every cabin. All beds had been recently replaced!



## POOL / LAKE ... Our lake equals TONS OF FUN!

Come fish, swim, canoe, paddle-boat and play in the waterfall in the refreshingly clear waters of Cypress Creek. The highlight of the lake area is a HUGE waterslide, which takes you speeding down from the top of a cliff to a splash landing in the center of the lake.



# SCHEDULE & STAFF

## A Day at Camp

8:00 Breakfast  
8:45 Warm-Up  
9:00 Basketball Block 1  
10:30 Snack  
10:45 Elective 1  
11:30 Basketball Block 2  
12:30 Lunch  
1:30 Rest Time  
2:15 Basketball Block 3  
3:45 Snack  
4:00 Elective 2  
4:45 Pool  
6:15 Dinner  
7:15 Free Time  
8:15 Night Time Activity  
9:45 Bunk Time  
10:15 Good Night!



Each day campers will train on the basketball court while developing an increased respect for sportsmanship, enhanced fundamental athletic abilities, and a deeper understanding of teamwork and responsibility.

In addition to working hard, ABC campers will play hard during two elective blocks everyday where they will get to choose from the many activities offered and supervised by trained and certified specialists. Activities include:

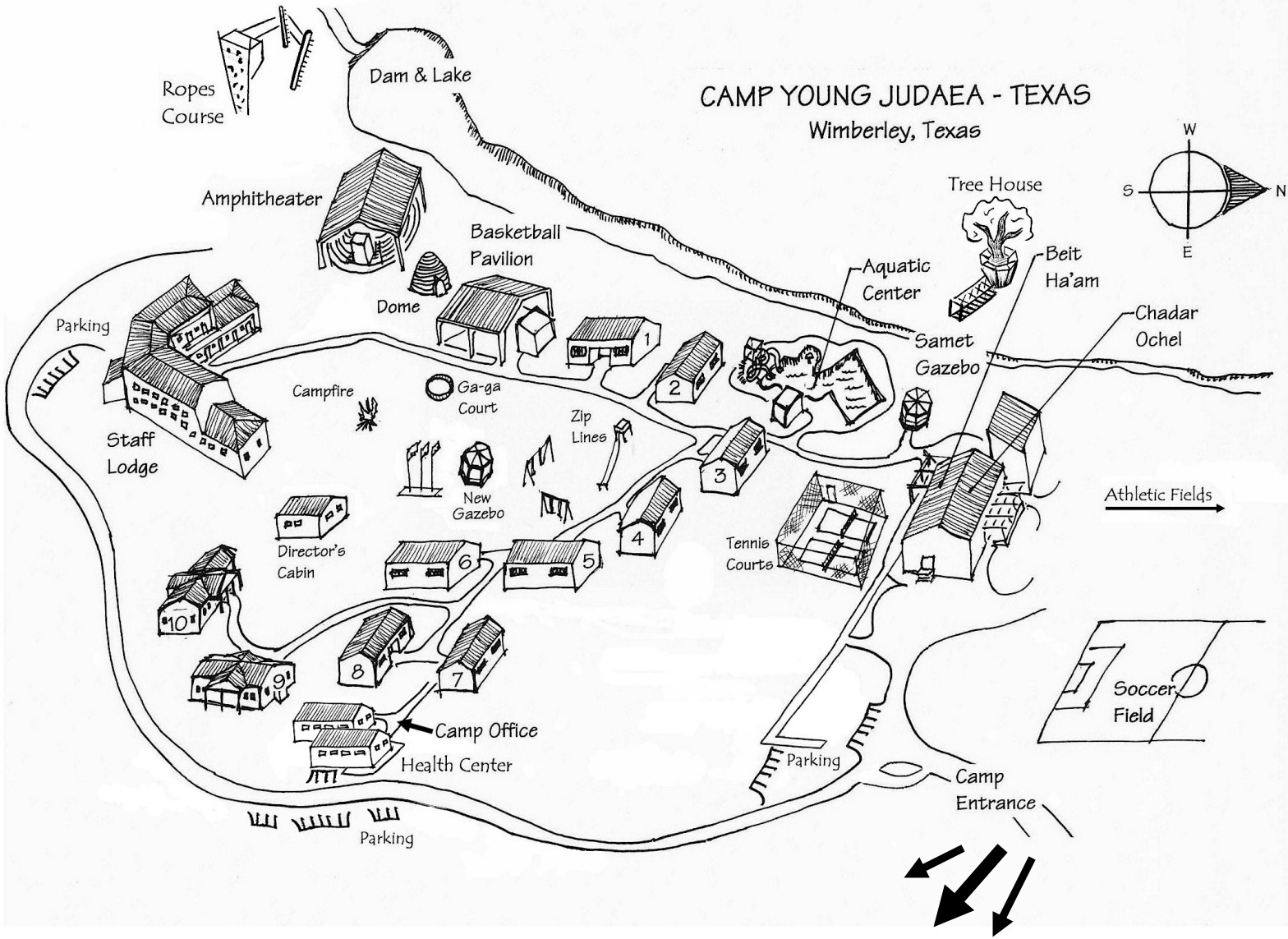
- Challenge Ropes Course
- Fishing and Boating
- Art: Ceramics, Painting, Cooking, Craft Projects and more!
- Archery
- Mountain Biking
- Other Sports: Tennis, Volleyball, Soccer, and Ultimate Frisbee



Everyday campers will take a dip in the water-park style pool at CYJ or slip and slide into the lake on our water slide!



# CYJ'S MAP



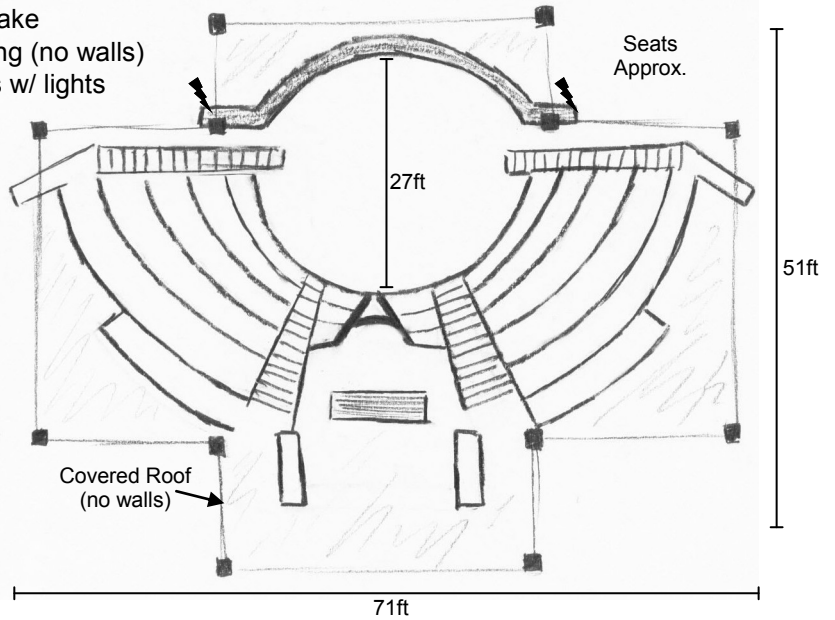


**AMPHITHEA-**

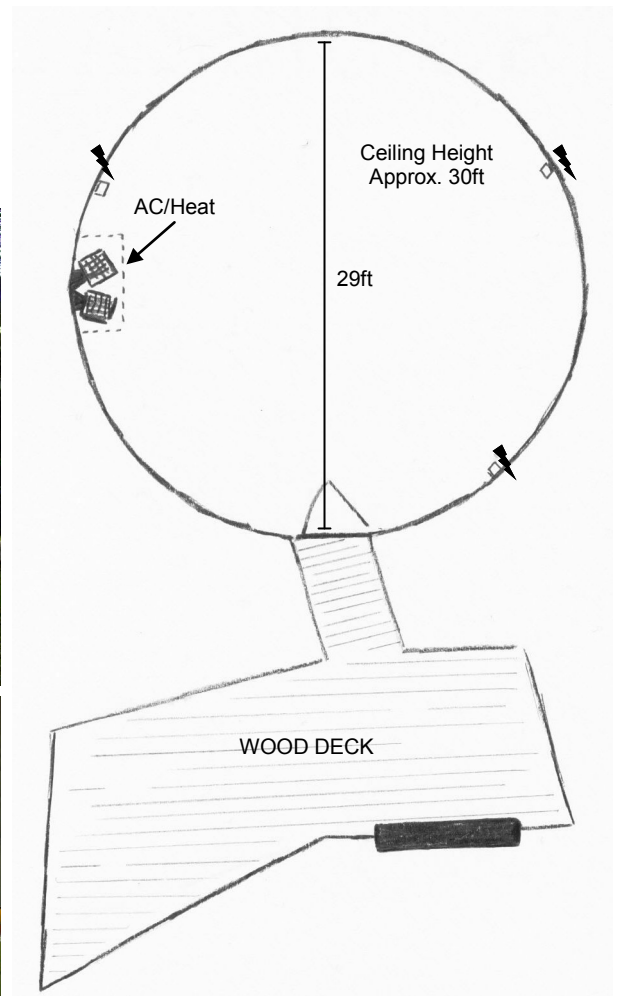
- outdoor and very scenic
- seats 250+
- overlooks lake
- roof covering (no walls)
- ceiling fans w/ lights



**AMPHITHEATER**



**THE DOME**



**DOME**

- ideal for presentations
- padded-white walls
- seats approx. 60
- carpet
- ceiling flood lighting
- AC/Heat
- *no food or drink please*

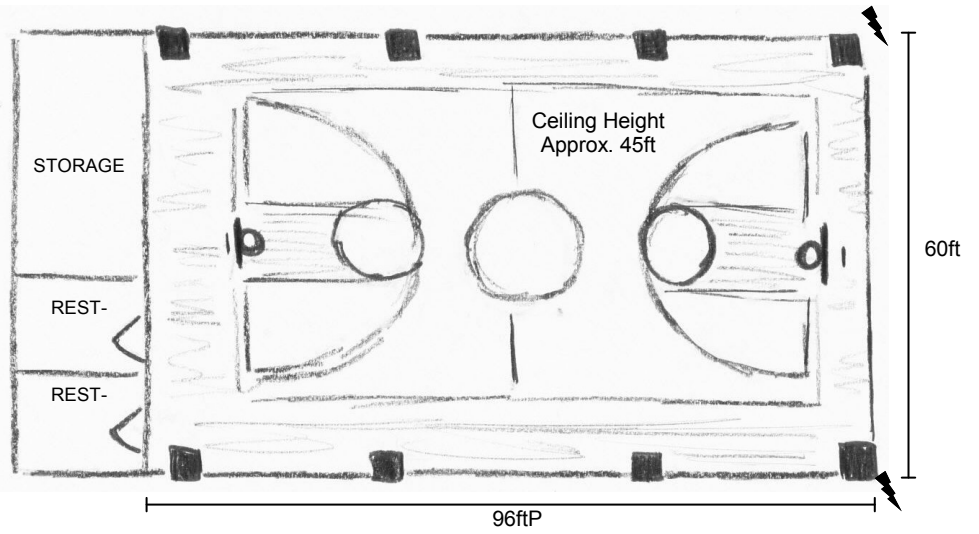


## PAVILION

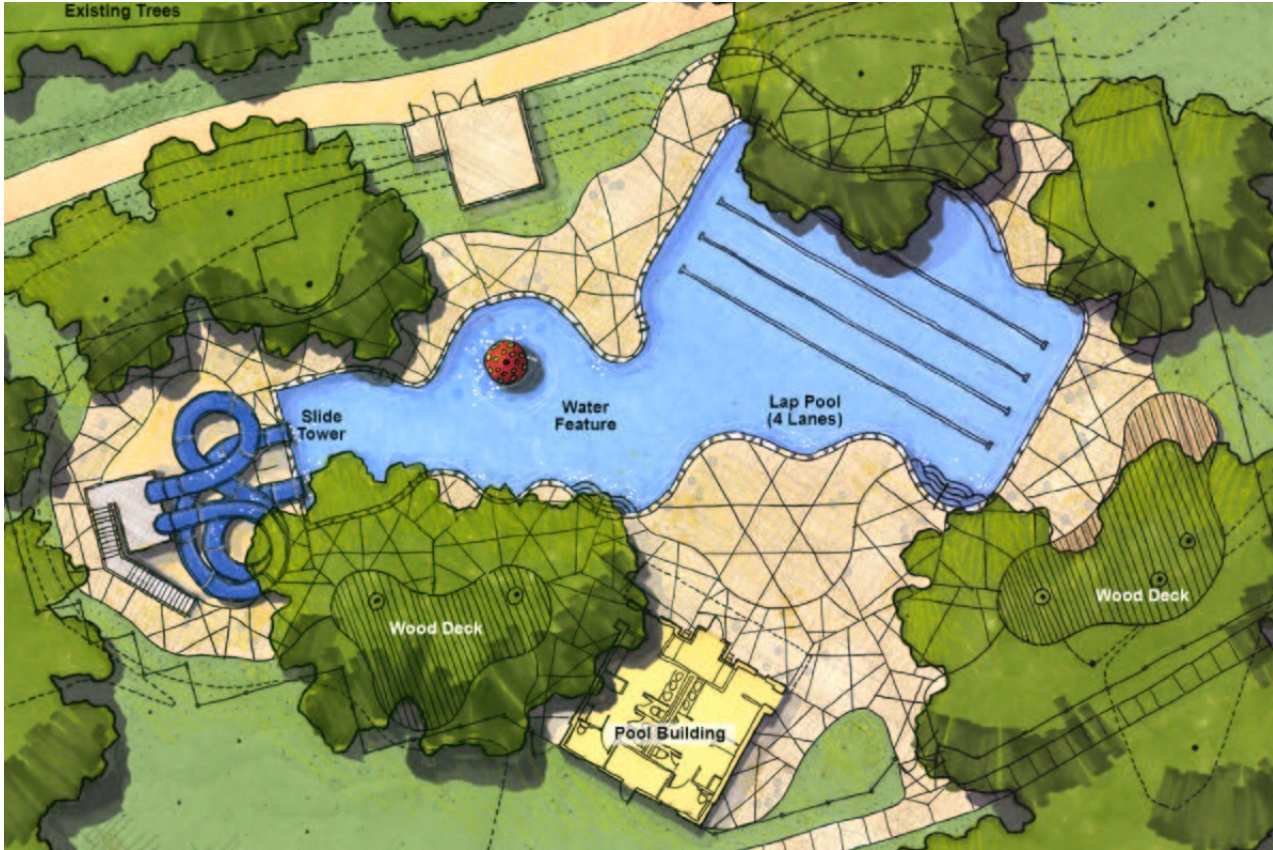
- Great for outdoor activities/ sports
- Covered roof (no walls)
- Gymnasium lighting



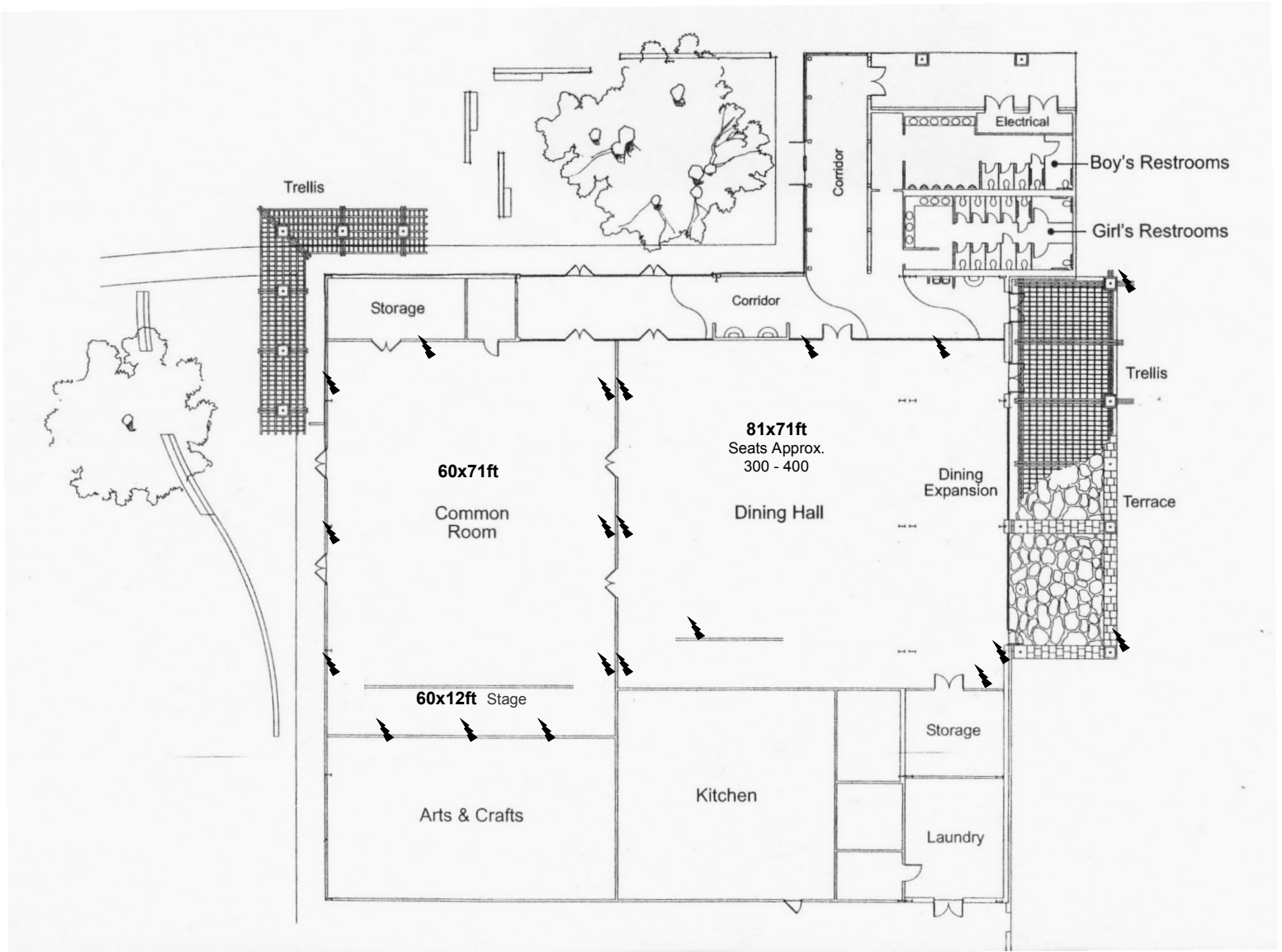
## PAVILION



## AQUATICS CENTER



# MAIN BUILDING COMPLEX



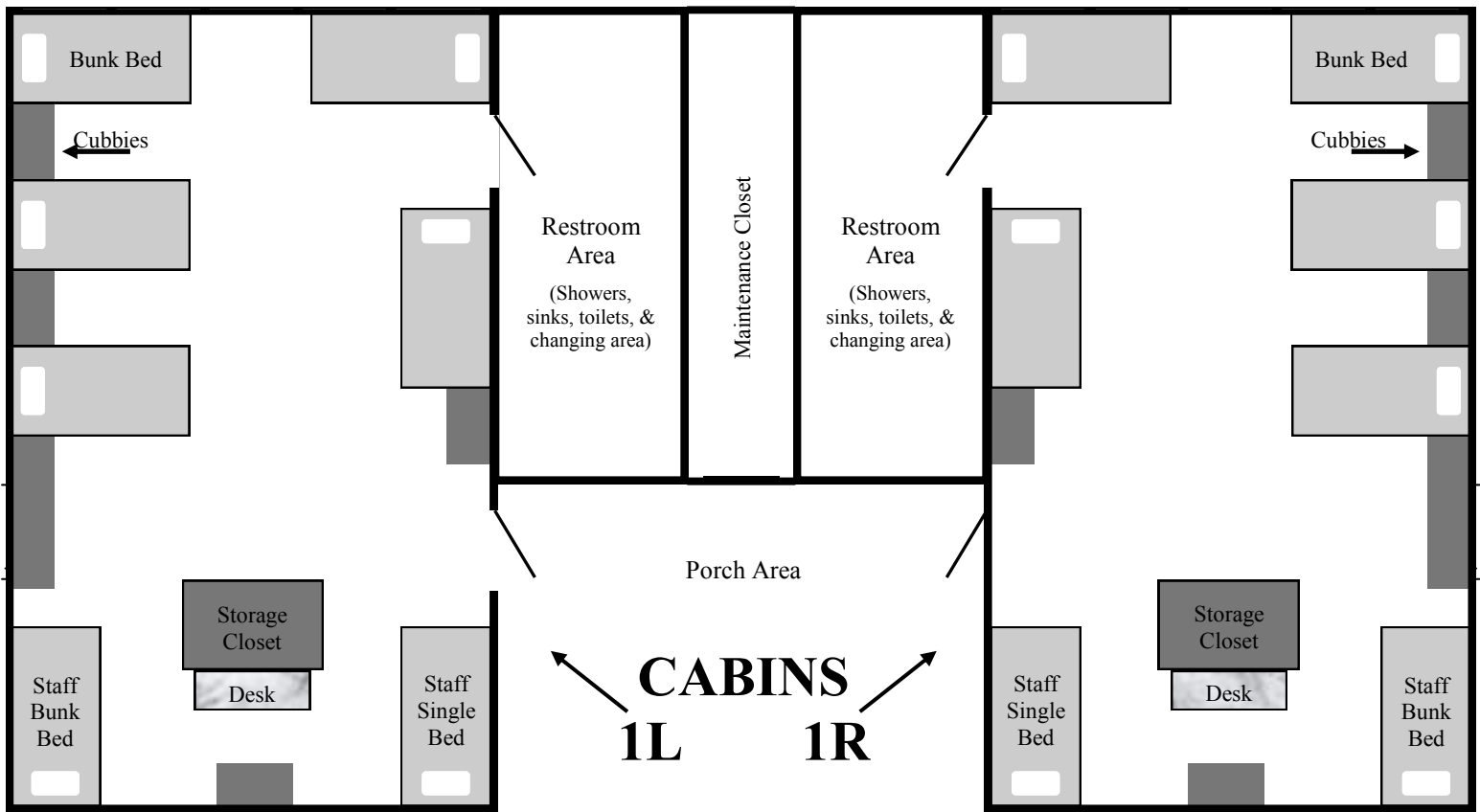
## DINING ROOM

- large eating area seats over 300 people
- large automated rest-rooms & baby changing station
- 3 hand washing stations
- sky & florescent lighting



## COMMON ROOM (Auditorium)

- very versatile, white-walled room
- Seats over 300 (theater style)
- ceiling fans, disco ball,
- Sound system, stage lighting
- sky & florescent lighting
- AC/Heat



CYJ Cabin



CYJ New Cabin



New Cabin Interior

## CABINS

20 air-conditioned cabins equipped with hot water, showers, sinks, toilets, and storage space provide comfortable beds, and there is ample space to store clothing and personal items. Each cabin can house between 15 to 19 people. All of the bunk beds have been recently replaced and upgraded.

<b>Cabin #</b>	<b># of Beds</b>	<b>Notes</b>
1L, 1R	15	Cabin 1 was recently remodeled and the interior looks very similar to the “New Cabin Interior” photo above. The beds and cubbies are solid wood framed. There are 10 camper beds and 3 staff beds.
2 thru 8 (L & R)	15	These well maintained existing cabins are continuing to be remodeled each year. The 12 camper beds are metal framed and the 3 staff beds are solid wood framed.
9 & 10 (L & R)	19	These are our 2 new cabins. All beds and cubbies are solid wood framed. There are 3 staff beds and 16 camper beds.

# Directions to CYJ

## From Austin-Bergstrom International Airport

Exit the airport and take a LEFT on TX-71 West. Continue straight and Texas 71 will become US-290 West. About 15 miles outside of Austin, at the Dripping Springs traffic light (immediately after the Dairy Queen on your right) turn left onto Ranch Road 12. After about 14 miles turn right into the City of Woodcreek (look for flags). Take the 3rd right onto Brookhollow. Then take the 3rd left onto Jack Miller Drive. Cross over Doolittle Drive and drive straight into our NEW camp entrance. Welcome to Camp!

## From Austin

Take MOPAC (Loop 1) South to 290 West toward Johnson City. About 15 miles outside of Austin, at the Dripping Springs traffic light (right after you see a Dairy Queen on your right) turn left onto Ranch Road 12. After about 14 miles turn right into the City of Woodcreek (look for flags on your right OR Winters Mill Pkwy on your left). You are now on Woodcreek Drive. Take the 3rd right onto Brookhollow. Then take the 3rd left onto Jack Miller Drive. Cross over Doolittle Drive and drive straight into our NEW camp entrance. Welcome to Camp!

## From San Antonio

Take I-35 North to San Marcos and exit the highway at Exit #202 (Wonder World Drive). Follow the sign to Wonder World Drive and turn left at the stop sign. Continue on Wonder World Drive to the traffic light at FM 2439 and turn right. Continue to the second traffic light and turn left onto Ranch Road 12. See "From San Marcos".

## From Houston

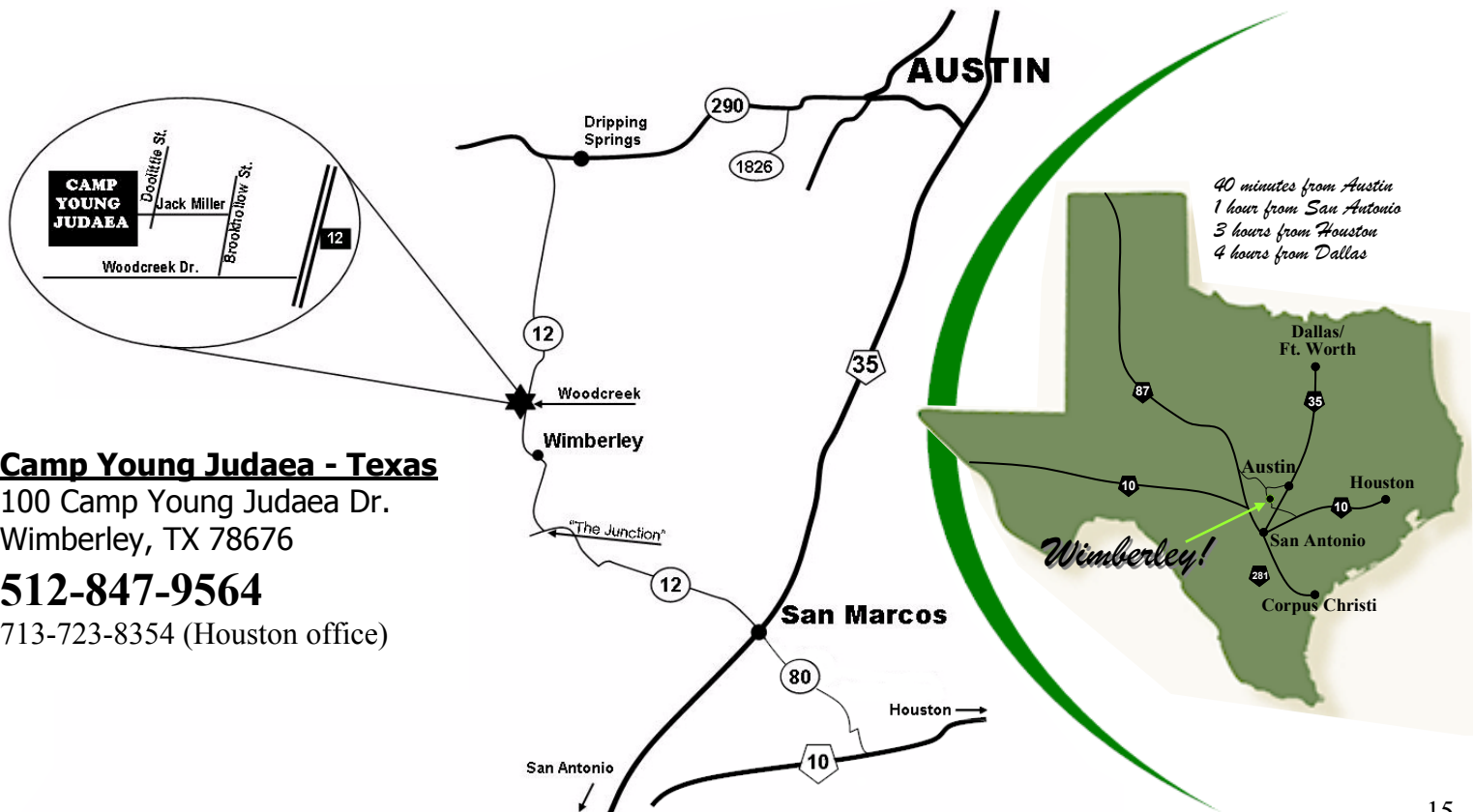
Take I-10 West to Luling and exit the highway at Exit #628 (San Marcos and Nixon). At the stop sign, turn right onto Texas Highway 80. Follow the Texas Highway 80 signs through Luling to San Marcos. As you enter San Marcos and cross underneath IH-35, Texas Highway 80 becomes Ranch Road 12. See "From San Marcos".

## From Dallas / Ft. Worth and Waco

Take I-35 South and exit Loop 1 South & follow Austin Directions. See "From Austin".

## From San Marcos

Follow Ranch Road 12 through downtown San Marcos. About a 1/4 mile outside of downtown, turn right onto Moore Street; you will still remain on RR 12 and there is a sign pointing to Wimberley. Continue on this road for about 10 miles and then turn right at the junction; once again there is a sign and you will remain on RR 12. This road takes you to Wimberley and through the Wimberley town square. Two miles past the Town Square, you will see the water tower on your left & just past that a left-turn lane at the entrance to The City of Woodcreek (look for flags). Enter Woodcreek and go down Woodcreek Drive. Take the 3rd right onto Brookhollow. Then take the 3rd left onto Jack Miller Drive. Cross over Doolittle Drive and drive straight into our NEW camp entrance. Welcome to Camp!



## Camp Young Judaea - Texas

100 Camp Young Judaea Dr.  
Wimberley, TX 78676

**512-847-9564**

713-723-8354 (Houston office)